

# A. B. DICK 350/360

## Frequently Used Part Numbers

### Rollers

All units after serial number 9008-02426 have a soft rubber pan roller and a hard rubber metering roller. Units with previous serial numbers must be upgraded.

X07-0101	Form Roller, Soft (Roller w/ roll pin)
X07-0318NS	Pan Roller, Soft
X07-0401	Oscillator Roller, Hard
XSA-070201NS	Metering Roller Assy., Hard (Roller, shaft, bearings, sleeves)

### Side Frame Assemblies

XSA-010136O	OPS Side Frame Assy. (Side frame w/ bearings)
XSA-010136N	NOPS Side Frame Assy. (Side frame w/ bearings)

### Hanger Bracket Kit

XSA-STDHANGERS	OPS & NOPS Hanger Assy. (Kit does both hangers)
----------------	--

### Gears

X03-121670	Form Gear (w/ roll pin)
XSA-03121619	Idler Gear Assy. (w/bushing, bolt)
XSA-03121624	Pan Gear Assy. (w/ clutch bearing)

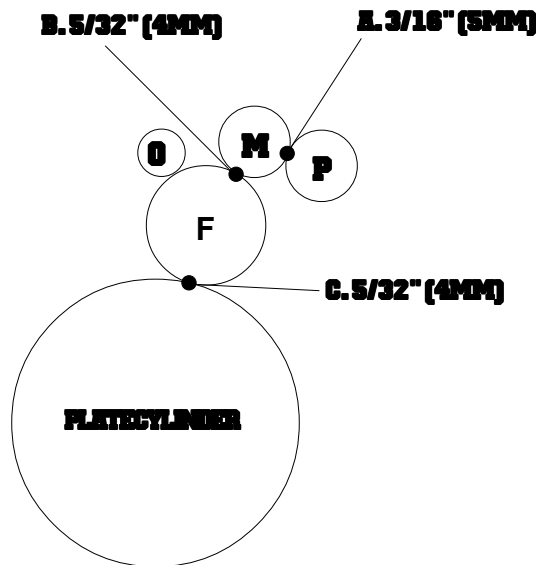
### Side Frame Bearings

(After Serial #9304-10195)	
X06-108	Sealed Ball Bearing (Requires qty. 4)
(Before Serial #9304-10195)	
X06-346038	Thin Flanged Bushing (Requires qty. 4)

### Miscellaneous

XSA-9903	Metering Thumb Screw Assy. (Thumb screw, ratchet gear, set screw)
XSA-991101	Pivot Stud Assy. (Pivot stud, washer, screw)
X09-0201	Compression Spring
X09-0105	Sequence Cam Spring
XSA-1101	Water Pan Assy. (w/ bottle bracket & pan bolts)
X99-28	Water Pan Hose
XSA-9905	Water Bottle (w/cap)
X99-61	Wash Up Bottle
X88-20	Installation Manual

PRINTERS PARTS  
800-543-1117 201-935-9595  
fax 800-392-4072 201-935-5333  
www.ppsnj.com



#### Adjustments

- Metering to Pan
- Form to Metering
- Form to Plate

#### Roller Description

P	=	Pan, Soft
M	=	Metering, Hard
O	=	Oscillator, Hard
F	=	Form, Soft