

DIDDE 11, 17 ALTRA

Frequently Used Part Numbers

These part numbers apply to units after serial number 9604-18619.

Rollers

X07-0158	Form Roller, Soft
X07-0353	Pan Roller, Hard
X07-0429	Oscillator Roller, Hard
XSA-070242	Metering Roller, Soft
XSA-070537	Intermed. Roller, soft

Side Frames

XSA-010163	OPS Side frame
XSA-010164	NOPS Side frame

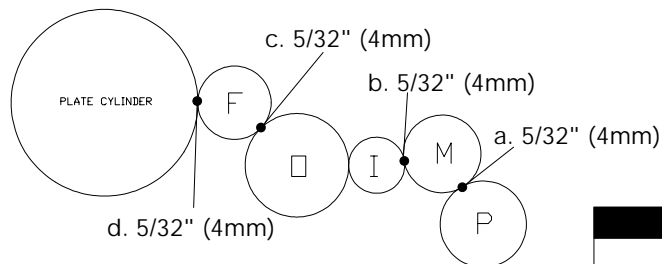
Bearings

X06-101	Sealed Ball Bearing, Pan Roller (2 per dampener)
X06-100	Sealed Ball Bearing, Form Roller (2 per dampener)

Miscellaneous

XSA-1143	Water Pan Assy. (w/pan bolts)
X99-90	Water Pan Bolt, Short (2 per pan)
XSA-2118	Splash Shield Assembly
X99-61	Wash Up Bottle
X88-91	Installation Manual

PRINTERS PARTS
800-543-1117 201-935-9595
fax 800-392-4072 201-935-5333
www.ppsnj.com



Adjustments

- a. Pan to Metering
- b. Intermediate to Metering
- c. Oscillator to Form
- d. Form to Plate

Roller Description

- P = Pan
- M = Metering
- I = Intermediate
- O = Oscillator, Hard
- F = Form, Soft