

HAMADA 611/612 PARENT

Frequently Used Part Numbers

Rollers

All units after serial #9012-03267 (Parent only) have a soft rubber pan roller and a hard metering roller. Units with previous serial numbers must be upgraded.

| | |
|--------------|--|
| X07-0117 | Form Roller, Soft |
| X07-0315NS | Pan Roller, Soft |
| X07-0415 | Oscillator Roller, Hard After Serial # 9304-10172 |
| X07-0408 | Oscillator Roller Hard Before Serial # 9304-10172 |
| XSA-070216NS | Metering Roller Assy., Hard (Roller, shaft, bearings, collars) |
| XSA-070504 | Intermed. Roller Assy., Soft (Roller, shaft, bearings, collars, roll pin) |

Side Frame Assemblies

| | |
|--------------|---|
| XSA-010650NO | OPS Side Frame Assy. (Side frame w/ bearings) |
| XSA-010650NN | NOPS Side Frame Assy. (Side frame w/ bearings) |

Gears

| | |
|--------------|---|
| XSA-03211538 | Form Gear Assy. (Gear w/ clutch bearing) |
|--------------|---|

| | |
|--------------|---|
| XSA-0321152N | Exterior Pan & Form Gear Assy. (Gear w/ clutch bearing) (2 per dampener) |
| XSA-03211520 | Exterior Idler Gear Assy. (Gear, bearing, shoulder bolt) (2 per dampener) |

Bearings

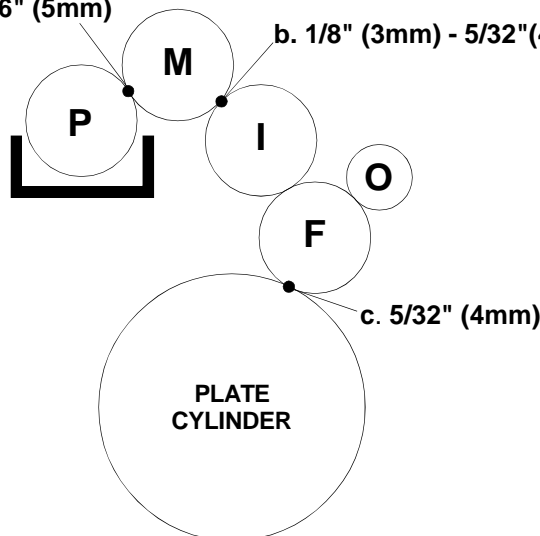
| | |
|----------------------------|---|
| (After serial #9211-08645) | |
| X06-108 | Sealed Ball Bearing, Side Frame (2 per dampener) |
| X06-346038* | Thin Flanged Bushing (2 per dampener) *4 per dampener before serial #9211-08645 |
| X06-103 | Sealed Ball Bearing, Pivot (2 per dampener) |

Miscellaneous

| | |
|----------|--|
| XSA-9903 | Metering Thumb Screw Assy. (Thumb screw, ratchet gear, set screw) |
| X09-0101 | Compression Spring (2 per dampener) |
| XSA-1120 | Water Pan Assy. (w/ pan bolts) |
| X99-28 | Water Pan Hose |
| X99-61 | Wash Up Bottle |
| X88-27 | Installation Manual |

PRINTERS PARTS
800-543-1117 201-935-9595
fax 800-392-4072 201-935-5333
www.ppsnj.com

a. 3/16" (5mm) b. 1/8" (3mm) - 5/32" (4mm)



Adjustments

- a. Pan to Metering
- b. Metering to Intermediate
- c. Form to Plate

Roller Description

| | | |
|---|---|--------------------|
| P | = | Pan, Soft |
| M | = | Metering, Hard |
| I | = | Intermediate, Soft |
| O | = | Oscillator, Hard |
| F | = | Form, Soft |