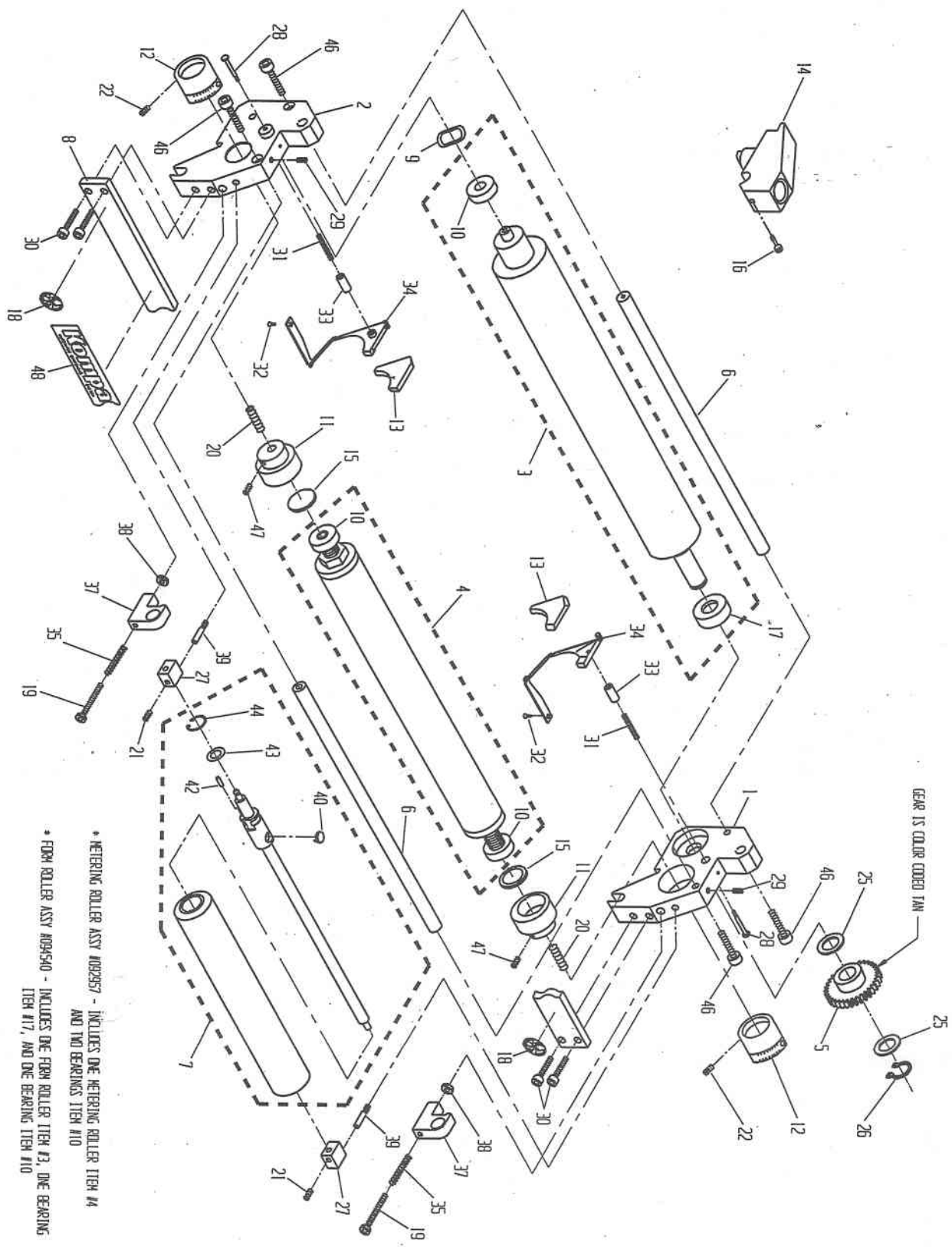


Rev 6/12/06
 Latest Version
 3-11-315

ADAST 315 UNIT PARTS LIST
 WITH OSCILLATOR
 PART NO. 094560



* WETTING ROLLER ASSY 0092957 - INCLUDES ONE WETTING ROLLER ITEM #4 AND TWO BEARINGS ITEM #10

* FROM ROLLER ASSY 009540 - INCLUDES ONE FROM ROLLER ITEM #3, ONE BEARING ITEM #17, AND ONE BEARING ITEM #10

ITEM	PART NO.	DESCRIPTION	QTY.
48.	000984	STICKER, I.D.	1
47.	001097	BRASS TIP SET SCREW M5 x 10	2
46.	001007	SOC. HD. CAP SCREW M5 x 20mm	4
45.			
44.	001997	RETAINING CLIP	1
43.	001965	RETAINING WASHER	1
42.	001949	SPRING PIN	1
41.			
40.	001111	DRIVE SWFT FOLLOWER	1
39.	003174	OSCILLATOR POST, LONG	2
38.	001970	1/4-28 NUT	2
37.	004342	SPRING HOUSING	2
36.			
35.	004347	SPRING	2
34.	002300	SEAL BACKING FLAKE ASSY	2
33.	002204	GUIDE PIN	2
32.	001002	#3-48 X 1/4" FLAT HEAD SCREW	2
31.	002220	COMPRESSION SPRING	2
30.	001761	SOC. HD. CAP SCREW M5 x 10mm	4
29.	001009	SET SCREW M5 x 10mm LONG	2
28.	002203	SHOULDER SCREW	2
27.	004326	ALIGNMENT BLOCK	2
26.	001662	RETAINING RING	1
25.	001966	STEEL WASHER	2
24.			
23.			
22.	001088	SET SCREW M5 x 5mm LONG	2
21.	001011	#10-24 x 1/4" SET SCREW	2
20.	001083	SET SCREW M8 x 10mm LONG	2
19.	001077	1/4-28 x 1.1/4 LG CAP SCREW	2
18.	002601	SAFETY STICKER	2
17.	002586	BALL BEARING	1
16.	004492	THUMB SCREW	1
15.	004456	HARDEST FLAKE	2
14.	004340	NOZZLE BLOCK ASSY, 3/14	2
13.	002200	VIRGIN TEFLOON SEAL SET	1
12.	002612	WETTING GAUGE	2
11.	004497	ECCENTRIC	2
10.	002401	BALL BEARING	3
9.	002491	VAPE WASHER	1
8.	004498	TIE BAR FLAKE	1
7.	002566	OSC. ROLLER ASSY	1
6.	004499	19 1/2" TIE BAR	2
5.	004490	GEAR CLUTCH ASSY	1
4.	002555	19 1/2" MET. ROLLER, IMBEDDED	1
3.	004559	19 1/2" FROM ROLLER	1
2.	004550	L.H. END FRAME (AOP-CP-SIDE)	1
1.	004502	R.H. END FRAME (CP-SIDE)	1