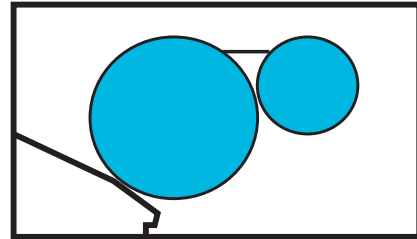


Date of Installation : \_\_\_\_\_

Unit Serial Number : \_\_\_\_\_

Kompac Dealer : **PRINTERS PARTS**  
800-543-1117 201-935-9595  
fax 800-392-4072 201-935-5333  
www.ppsnj.com

***VARN***  
**Kompac**®



**MODEL : KOM-25**

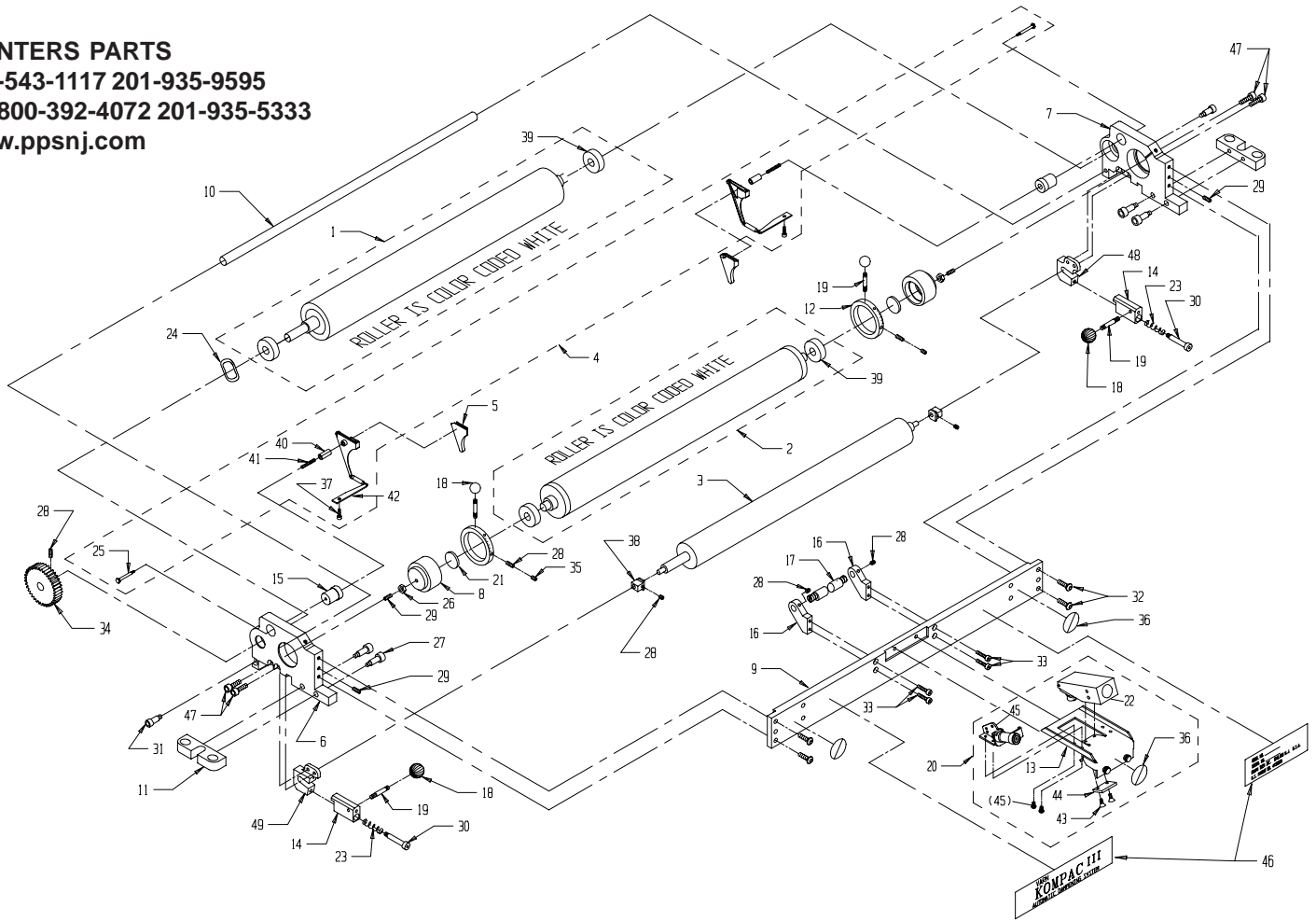
PARTS CATALOG # 98743 REV.-

**PRINTERS PARTS**

800-543-1117 201-935-9595

fax 800-392-4072 201-935-5333

www.ppsnj.com



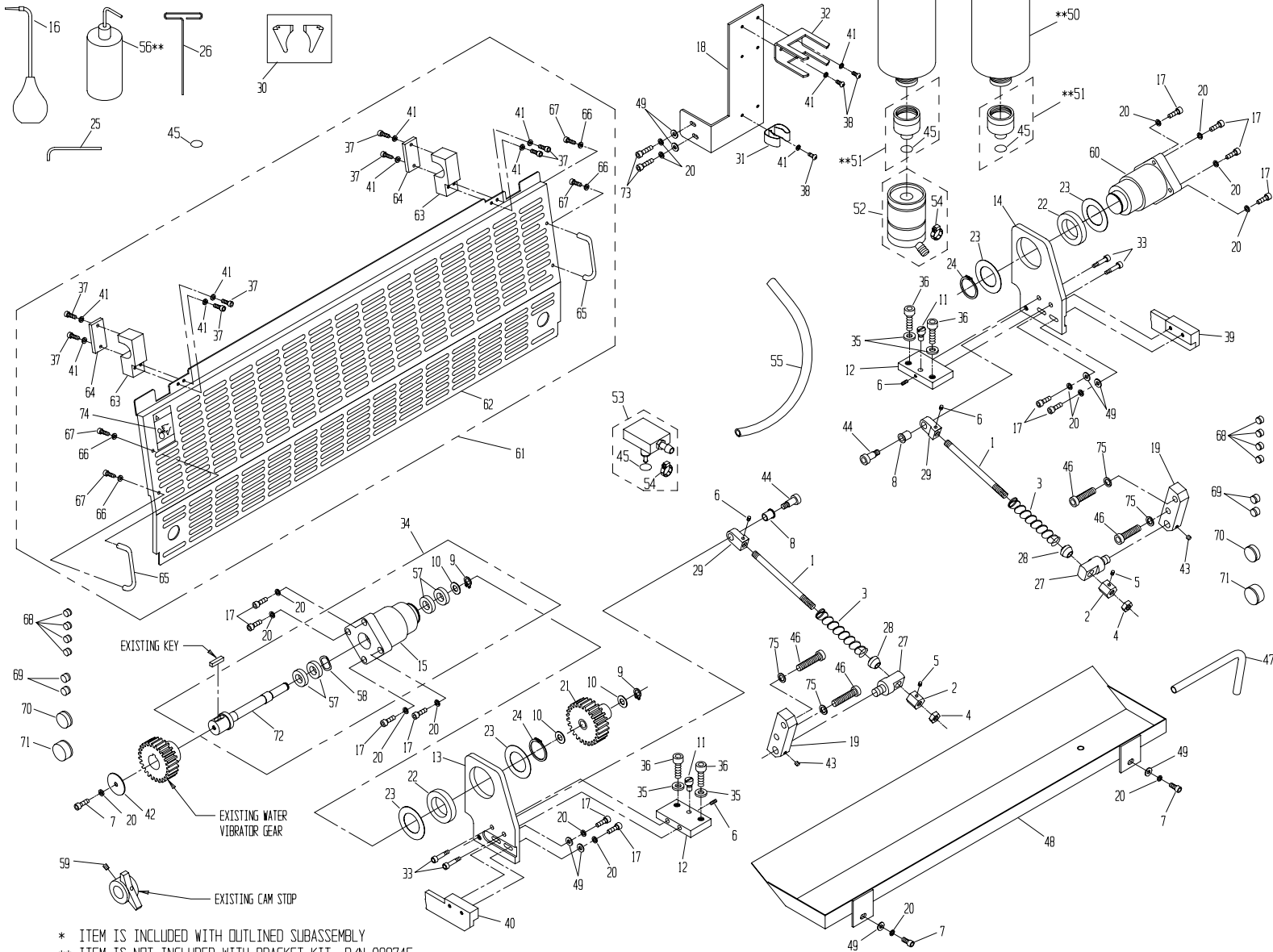
\* ITEM IS INCLUDED WITH OUTLINED SUBASSEMBLY

49	091423	L.H. OSCILLATOR BLOCK	1
48	091424	R.H. OSCILLATOR BLOCK	1
47	091773	M6 x 12MM CAP SCREW	4
46	098026	LABELS, TIE PLATE	1
45	098148	NOZZLE LATCH ASS'Y	*
44	098064	SPACER, NOZZLE BRACKET	*
43	092003	#6-32x1/2" FLT. HD. SCR	*
42	091406	Spring Plate, GT46/52	*
41	092242	Compression Spring	*
40	092304	Guide Pin	*
39	092586	Forn/Metering Bearing	*
38	092174	Metric Alignment Block	2
37	091760	M4 x 10mm Cap Screw	*
36	092601	Safety Sticker	02*
35	091909	M5 x 4mm Set Screw, Slotted	02
34	098738	Forn Roller Gear	01
33	091891	M5 x 16mm Cap Screw	04
32	091761	M6 x 18mm Cap Screw	04
31	091711	Ø6mm x 16mm Sh'ldr Scr	02
30	091708	Ø6mm x 30mm Sh'ldr Scr	02
29	091703	M5 x 12mm Set Screw	04
28	091888	M5 x 5mm Set Screw	07
27	091722	M8 x 16mm SHOULDER SCR.	04
26	091752	M5 Nut	02
ITEM#	PART #	DESCRIPTION	QTY

25	092303	Shoulder Screw	*
24	091772	WAVE WASHER	01
23	095698	Compression Spring	02
22	092700	Nozzle	*
21	091413	Thrust Plate	02
20	098650	Nozzle Bracket Assembly	01
19	091417	Threaded Stud, short	04
18	092055	Ball Knob	04
17	098007	ECCENTRIC, NOZZLE BKT.	01
16	098008	ECCENTRIC BRACKET	02
15	091407	Backing Plate Standoff	02
14	095697	Clamp, Oscillator	02
13	098022	BRACKET, NOZZLE	*
12	091416	Metering Gauge	02
11	091419	Attachment Block	02
10	098736	Tie Rod	01
09	098737	Tie Plate	01
08	091412	Metering Rol. Eccentric	02
07	098860	R.H. ENDFRAME	01
06	098859	L.H. ENDFRAME	01
05	090850	R.H. and L.H. Seal Set	01
04	091450	Seal Backing Plate Kit	01
03	099820	OSCILLATOR ROLLER ASS'Y	01
02	098732	Metering Roll Assy	01
01	098727	Forn Roller Assy	01
ITEM#	PART #	DESCRIPTION	QTY

# KOM-25 BRACKET KIT: P/N 098745

PARTS CATALOG #098743 REV.



\* ITEM IS INCLUDED WITH OUTLINED SUBASSEMBLY  
 \*\* ITEM IS NOT INCLUDED WITH BRACKET KIT, P/N 098745

ITEM#	PART #	DESCRIPTION	QTY
75	092127	BELLVILLE WASHER, .413 ID x .630 OD	04
74	098134	LABEL, SAFETY COVER	01
73	091761	M6 x 18 MM CAP SCREW	01
72	098753	DRIVE SHAFT	02
71	098537	BLANKING PLUG (V 24)	02
70	098536	BLANKING PLUG (V 232)	02
69	098532	BLANKING PLUG (V 9)	04
68	098531	BLANKING PLUG (V 5)	08
67	091845	10-32 x 3/8 CAP SCREW	04
66	091978	WASHER	04
65	092077	PULL HANDLE	02
64	098774	SAFETY COVER PLATE	02
63	098773	SAFETY COVER BRACKET	02
62	098772	SAFETY COVER	01
61	098771	SAFETY COVER ASS'Y	01
60	098749	PIVOT HOUSING	01
59	092126	M6 x 10MM SET SCREW	01
58	092018	WAVE WASHER	*
57	092017	BALL BEARING (61902)	*
56	092774	WASH UP BOTTLE	**
55	092756	1/2 ID VINYL HOSE	01
54	091911	ADJUSTABLE CLAMP	*
53	092750	ADAPTOR BASE ASSEMBLY	01
52	092740	BOTTLE VALVE ASSEMBLY	01
51	092760	DISPENSING VALVE ASSEMBLY	**

ITEM#	PART #	DESCRIPTION	QTY
50	092772	1/2 GALLON CALIBRATED BOTTLE	**
49	091962	WASHER	08
48	098768	DRIP PAN	01
47	091528	3/8 VINYL TUBING	01
46	092125	M10 x 40MM LOW HEAD CAP SCREW	04
45	092765	O-RING	1*
44	092124	M10 x 16MM SHOULDER SCREW	02
43	091700	M6 x 6MM SET SCREW	02
42	092016	WASHER 1/4 x 1 1/2 x .12	01
41	091689	M5 BELLVILLE WASHER	11
40	098763	L.H. LIFT CAM	01
39	098762	R.H. LIFT CAM	01
38	091698	M5 x 12MM CAP SCREW	03
37	091891	M5 x 16MM CAP SCREW	08
36	091755	M10 x 25MM CAP SCREW	04
35	091976	Ø 10MM, PLAIN WASHER	04
34	098751	ASS'Y, DRIVE SHAFT- HOUSING	01
33	091608	ØMM x 25MM SHOULDER SCREW	04
32	092749	UNIVERSAL BOTTLE BRACKET	01
31	091672	SPRING CLIP	01
30	090850	R.H. AND L.H. SEAL SET	01
29	098777	SPRING ROD BLOCK	02
28	095516	SPRING RETAINER	02
27	098769	SPRING ROD STANDOFF	02
26	090756	T-ALLEN KEY 2.5MM	01

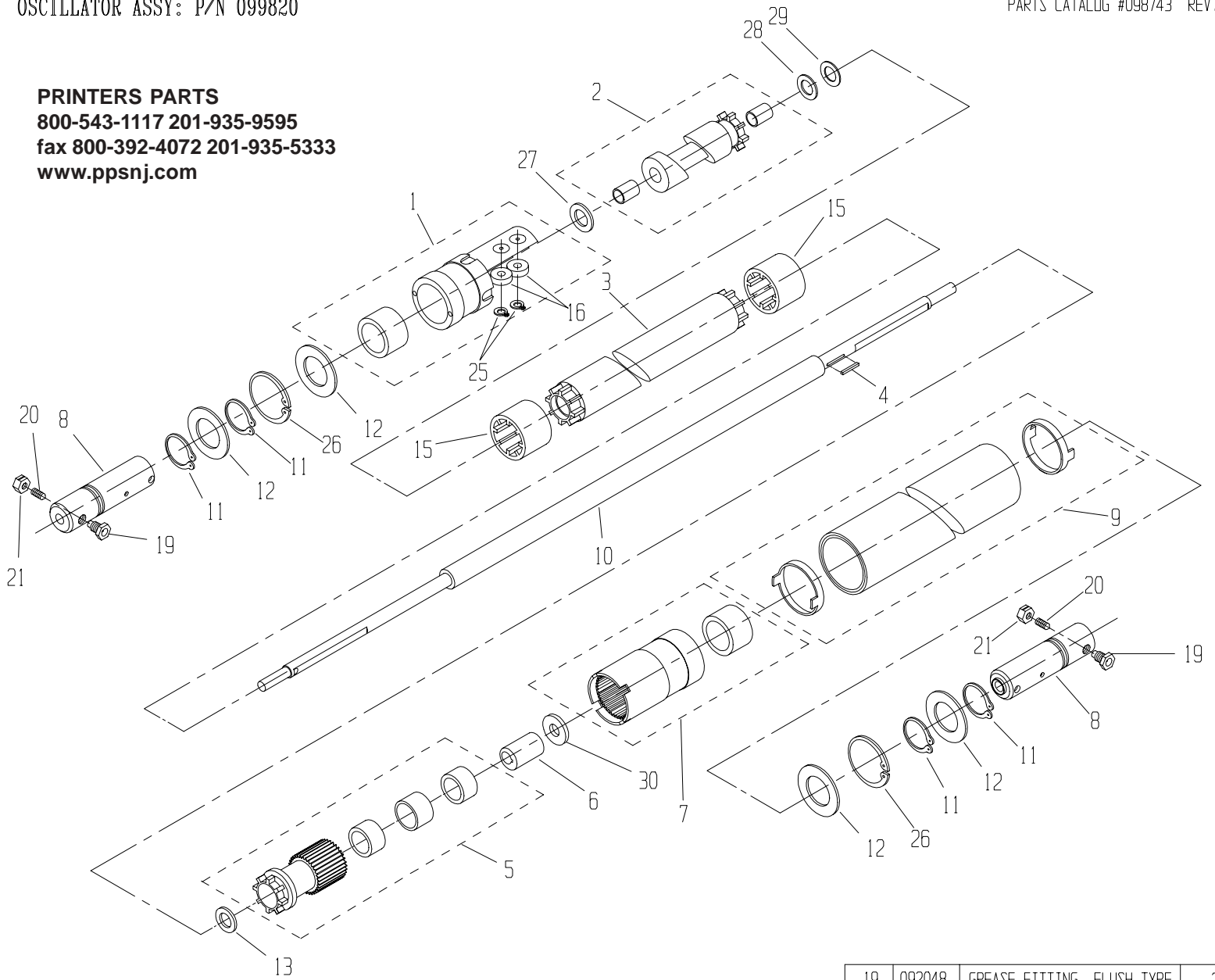
ITEM#	PART #	DESCRIPTION	QTY
25	090758	BALL END ALLEN KEY 8MM	01
24	091705	RETAINING RING 1 3/8	02
23	091706	SHIM	04
22	098511	BALL BEARING (61907)	02
21	098754	ASS'Y, GEAR-CLUTCH	01
20	091637	BELLVILLE WASHER .264 x .374	17
19	098766	SPRING ROD MOUNTING BLOCK	02
18	098767	BOTTLE BRACKET	01
17	091786	M6 x 25MM CAP SCREW	12
16	092779	LONG NECK SYRINGE	01
15	098752	DRIVE SHAFT HOUSING	01*
14	098758	R.H. MOUNTING BRACKET	01
13	098759	L.H. MOUNTING BRACKET	01
12	098761	FIXING BLOCK	02
11	091511	ADJUSTING ECCENTRIC	02
10	091966	SHIM	02*
09	091662	12 MM RETAINING RING	01*
08	098778	SPRING ROD BUSHING	02
07	091785	M6 x 14MM CAP SCREW	03
06	091888	M5 x 5MM SET SCREW	04
05	091546	M4 x 6MM NYLON SET SCREW	02
04	091547	HEX JAM NUT	02
03	094917	COMPRESSION SPRING	02
02	094867	ADJUSTING NUT	02
01	098035	SPRING ROD	02

**PRINTERS PARTS**

800-543-1117 201-935-9595

fax 800-392-4072 201-935-5333

www.ppsnj.com



\* PART INCLUDED WITH OUTLINED ASSEMBLY

ITEM	PART #	DESCRIPTION	QTY
30	095787	WASHER	1
29	095784	WASHER	1
28	095783	BEARING THRUST	1
27	095782	BEARING THRUST	1
26	092108	RET. RING	2
25	092109	RET. RING	*
24	-	-	-
23	-	-	-
22	-	-	-
21	092116	NUT, LOCK 8-32	2
20	092115	SCREW, SET 8-32x1/2	2

19	092048	GREASE FITTING, FLUSH TYPE	2
18	-	-	-
17	-	-	-
16	095762	BEARING, EXTRA SMALL	*
15	095759	COUPLING SLEEVE	2
14	-	-	-
13	092114	WASHER, THRUST	1
12	092113	WASHER, 1.29x.76x.06	4
11	092107	RET. RING EXTERNAL	4
10	099548	SHAFT	1
9	099822	ROLLER ASSY (RUBBER)	1
8	095752	SHAFT SUPPORT	2
7	095777	INTERN. SPUR GEAR ASSY	1
6	099550	ECCENTRIC	1
5	099821	PINION CPLNG ASSY	1
4	092105	KEY, SQ 1/16x1/16x1/2 LG	1
3	099547	SPACER TUBE	1
2	095775	OSCILL. CAM ASSY	1
1	095774	CAM FOLLOWER ASSY	1
ITEM	PART #	DESCRIPTION	QTY