

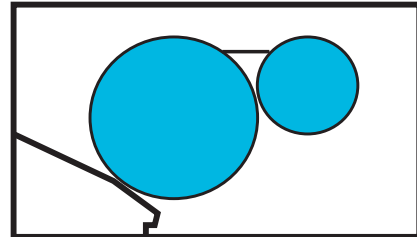
Date of Installation : \_\_\_\_\_

Unit Serial Number : \_\_\_\_\_

Kompac Dealer : \_\_\_\_\_

PRINTERS PARTS  
800-543-1117 201-935-9595  
fax 800-392-4072 201-935-5333  
www.ppsnj.com

***VARN***  
**Kompac<sup>®</sup>**



**MODEL : M-125**  
PARTS CATALOG # 90172 REV.C

# M 125-S PARTS CATALOG

P/N 90172

## PRINTERS PARTS

800-543-1117 201-935-9595

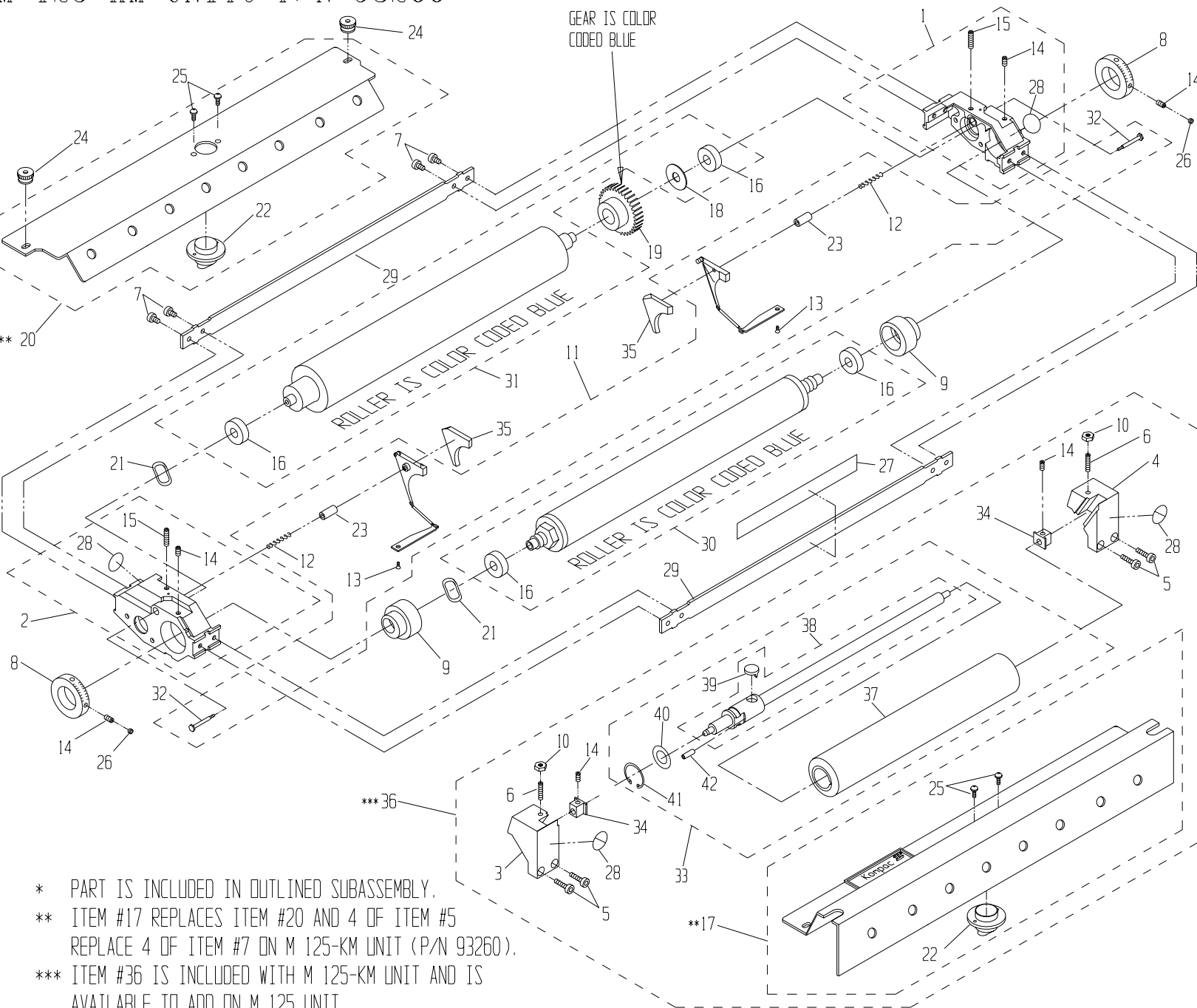
fax 800-392-4072 201-935-5333

[www.ppsnj.com](http://www.ppsnj.com)

REV	DESCRIPTION	ECN	BY	DATE
A	UPDATED TO NEW PARTS CATALOG FORMAT	992	MJC	7-13-94
B	EXPLODED OSCILLATOR PARTS ASSY, CORRECTED P/N TO 91302, WAS 91301	1071	MJC	12-30-94
C	91851 WAS 91849	1521	BS	5-10-99

M 125 UNIT: P/N 93000

M 125-KM UNIT: P/N 93260



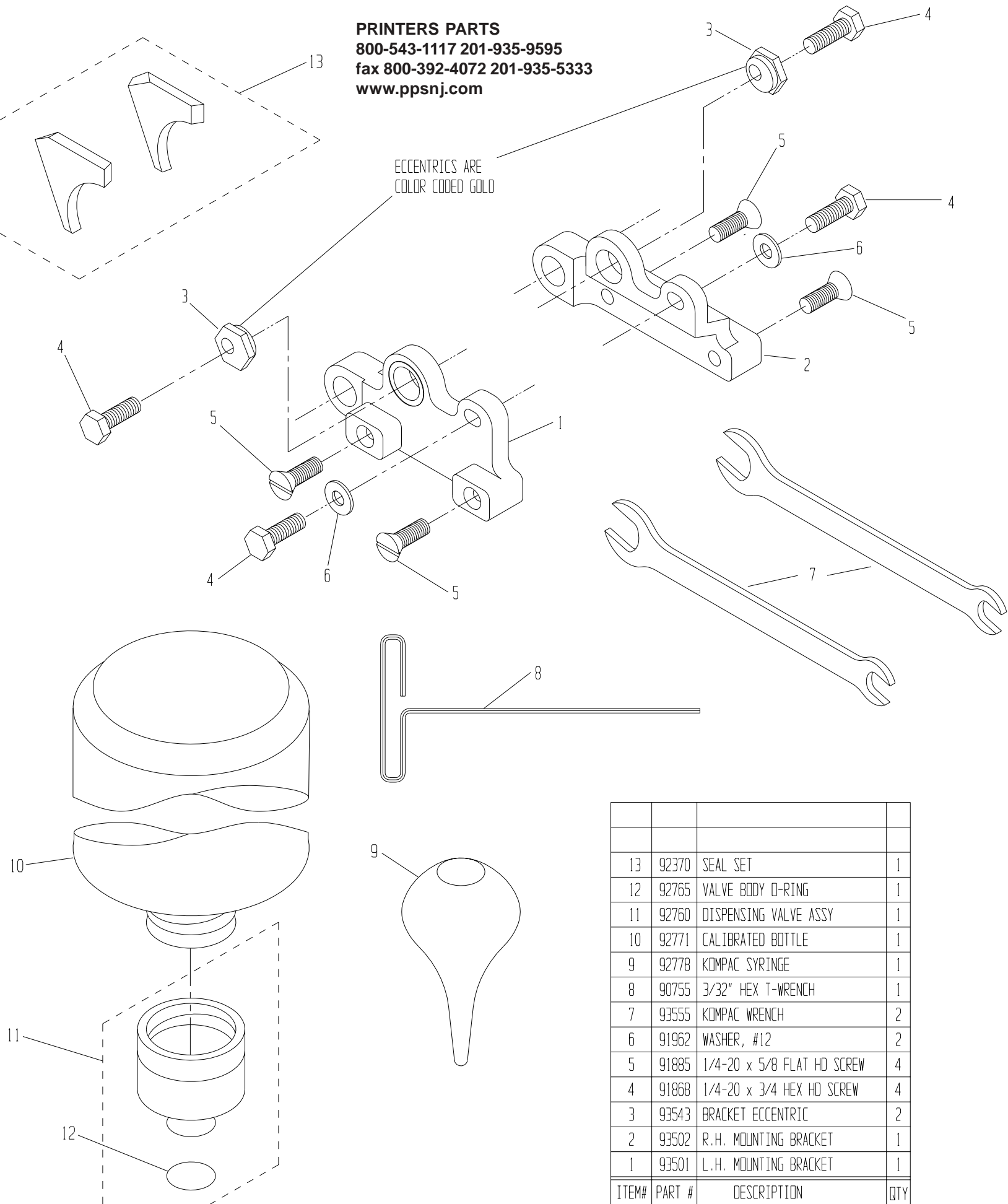
- \* PART IS INCLUDED IN OUTLINED SUBASSEMBLY.
- \*\* ITEM #17 REPLACES ITEM #20 AND 4 OF ITEM #5 REPLACE 4 OF ITEM #7 ON M 125-KM UNIT (P/N 93260).
- \*\*\* ITEM #36 IS INCLUDED WITH M 125-KM UNIT AND IS AVAILABLE TO ADD ON M 125 UNIT.

ITEM#	PART #	DESCRIPTION	QTY
42	91949	SPRING PIN	*
41	91997	OSC. RETAINING CLIP	*
40	91965	OSC. RETAINING WASHER	*
39	91111	OSC. DRIVE SHAFT FOLLOWER	*
38	91220	OSCILLATOR SHAFT ASSY, 11"	*
37	91120	OSCILLATOR ROLLER, 11"	*
36	96520	KOLORMATE MODEL 20	***
35	92370	SEAL SET	1
34	91219	ALIGNMENT BLOCK	2
33	91302	11" OSC. ROLLER PARTS ASSY	1
32	92303	SHOULDER SCREW	*
31	92410	11" FORM ROLLER ASSY	1

ITEM#	PART #	DESCRIPTION	QTY
30	92400	11" METERING ROLLER ASSY	1
29	92492	11" TIE BAR	2
28	92601	INWARD NIP SYMBOL	2*
27	92494	WARNING STICKER	1
26	91810	#10-24 X 1/8 SLOT SET SCREW	2
25	91806	#6-32 X 3/8 PHIL HD SCREW	*
24	92691	COVER NUT	2
23	92304	GUIDE PIN	*
22	92604	NOZZLE	*
21	92491	WAVE WASHER	2
20	92600	UNIT COVER ASSY	**
19	92800	GEAR CLUTCH ASSY	1
18	92415	THRUST WASHER	*
17	91320	11" OSCILLATOR COVER ASSY	**
16	92401	BEARING	*

ITEM#	PART #	DESCRIPTION	QTY
15	91814	#10-24 X 3/4 STUD	*
14	91811	#10-24 X 1/4 SET SCREW	4*
13	91802	#3-48 X 1/4 FLAT HD SCREW	*
12	92238	COMPRESSION SPRING	*
11	92290	BACKING PLATE KIT (L & R)	1
10	91982	#10-32 NUT	2
9	92291	ECCENTRIC	2
8	92222	METERING GAUGE	2
7	91818	#10-24 X 3/8 SOC HD SCREW	8
6	91851	SOCKET HD SCREW	2
5	91829	#10-24 X 11/16 SOC HD SCREW	**
4	91017	R.H. OSC. END BLOCK	1
3	91018	L.H. OSC. END BLOCK	1
2	92210	L.H. END FRAME ASSY	1
1	92200	R.H. END FRAME ASSY	1

**PRINTERS PARTS**  
 800-543-1117 201-935-9595  
 fax 800-392-4072 201-935-5333  
 www.ppsnj.com



13	92370	SEAL SET	1
12	92765	VALVE BODY O-RING	1
11	92760	DISPENSING VALVE ASSY	1
10	92771	CALIBRATED BOTTLE	1
9	92778	KOMPAC SYRINGE	1
8	90755	3/32" HEX T-WRENCH	1
7	93555	KOMPAC WRENCH	2
6	91962	WASHER, #12	2
5	91885	1/4-20 x 5/8 FLAT HD SCREW	4
4	91868	1/4-20 x 3/4 HEX HD SCREW	4
3	93543	BRACKET ECCENTRIC	2
2	93502	R.H. MOUNTING BRACKET	1
1	93501	L.H. MOUNTING BRACKET	1
ITEM#	PART #	DESCRIPTION	QTY