

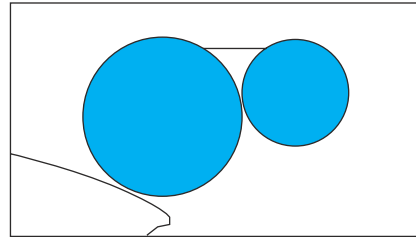
PRINTERS PARTS  
800-543-1117 201-935-9595  
fax 800-392-4072 201-935-5333  
www.ppsnj.com

Date of Installation : \_\_\_\_\_

Unit Serial Number : \_\_\_\_\_

Kompac Dealer : \_\_\_\_\_

# Kompac®



A DIVISION OF DAY INTERNATIONAL, INC.



DAY INTERNATIONAL, INC.

Image Transfer Group

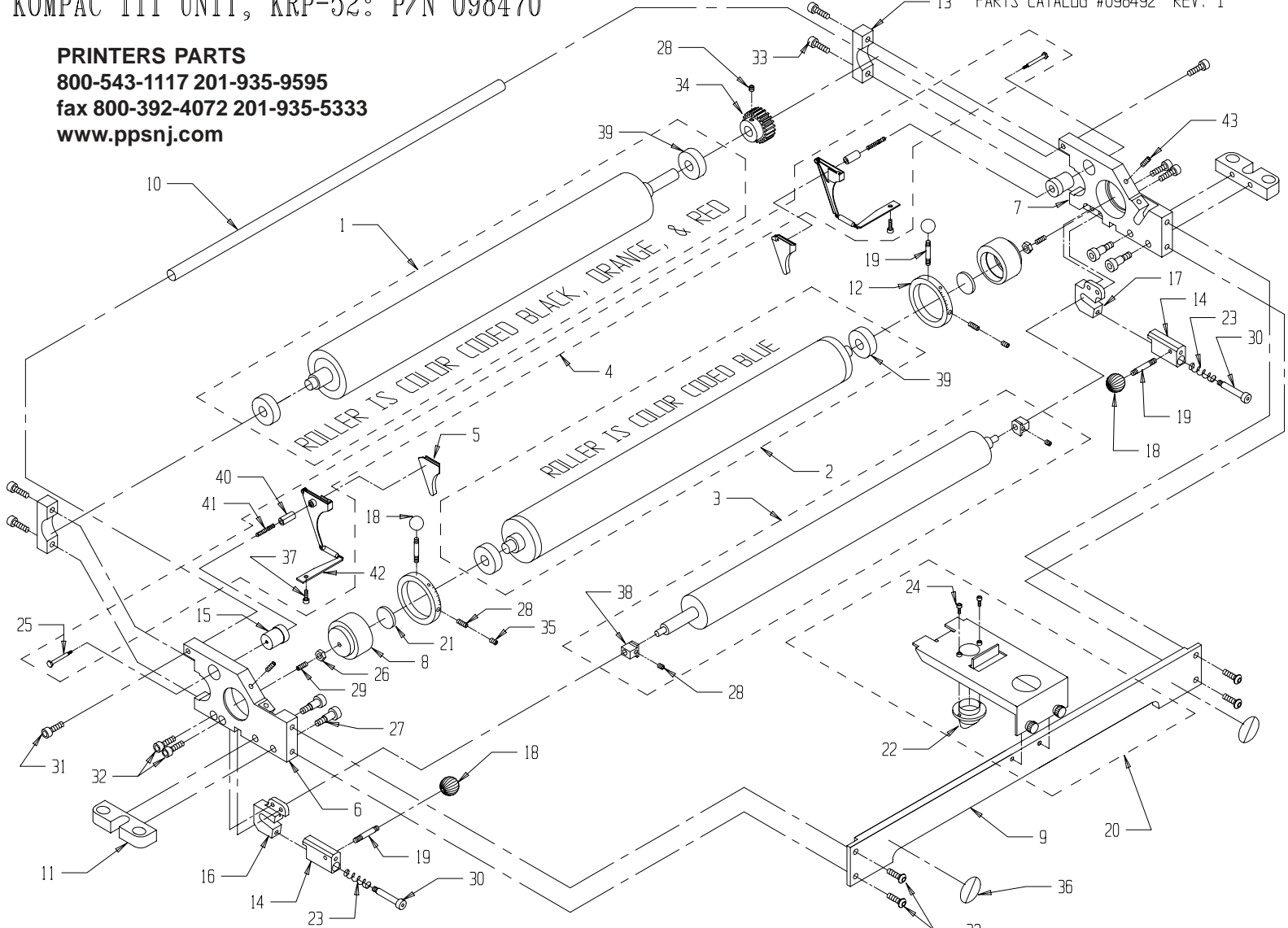
**Kompac**



## KRP - 52

Parts Catalog # 098492

**PRINTERS PARTS**  
 800-543-1117 201-935-9595  
 fax 800-392-4072 201-935-5333  
 www.ppsnj.com



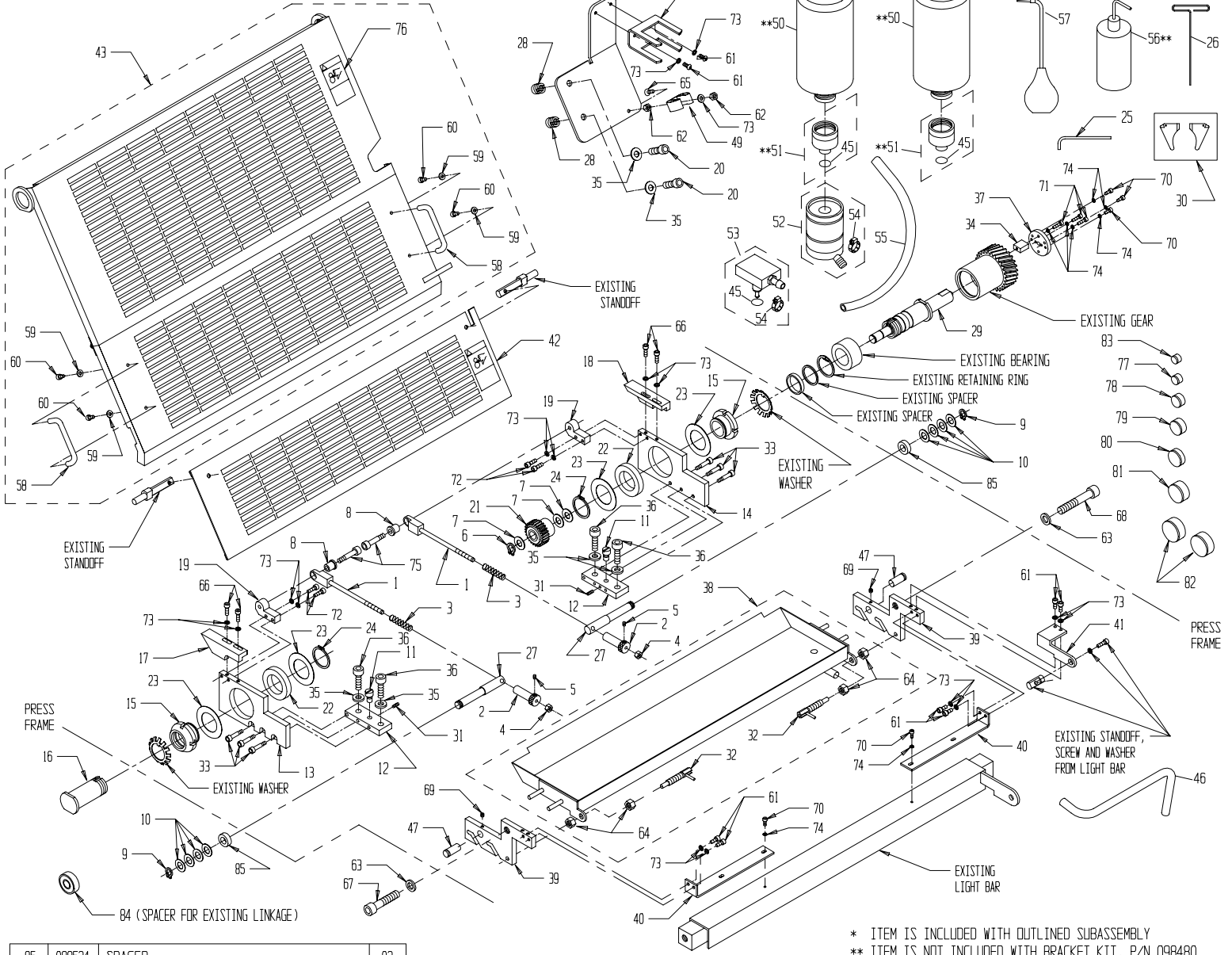
43	091687	M5 x 8mm SET SCREW	02
42	091406	Spring Plate, GT46/52	*
41	092242	Compression Spring	*
40	092304	Guide Pin	*
39	092586	Form/Metering Bearing	*
38	092174	Metric Alignment Block	*
37	091760	M4 x 10mm Cap Screw	*
36	092601	Safety Sticker	02
35	091909	M5 x 4mm Set Screw, Slotted	02
34	098519	Form Roller Gear	01
33	091761	M6 x 18mm Cap Screw	04
32	091773	M6 x 12mm Cap Screw	08
31	091711	Ø6mm x 16mm Sh'ldr Scr	02
30	091708	Ø6mm x 30mm Sh'ldr Scr	02
29	091703	M5 x 12mm Set Screw	02
28	091888	M5 x 5mm Set Screw	03*
27	091722	M8 x 16mm SHOULDER SCREW	04
26	091752	M5 Nut	02
25	092303	Shoulder Screw	*
24	091907	6-32 x 3/8" Phil Sc., Blk	*
23	095698	Compression Spring	02
22	092604	Nozzle	*
ITEM#	PART #	DESCRIPTION	QTY

\* ITEM IS INCLUDED WITH OUTLINED SUBASSEMBLY

21	091413	Thrust Plate	02
20	095650	Nozzle Bracket Assembly	01
19	091417	Threaded Stud, short	04
18	092055	Ball Knob	04
17	091424	Oscillator Block RH	01
16	091423	Oscillator Block LH	01
15	091407	Backing Plate Standoff	02
14	095697	Clamp, Oscillator	02
13	092179	Form Rol. Bearing Clamp	02
12	091416	Metering Gauge	02
11	091419	Attachment Block	02
10	091418	Tie Rod	01
09	091415	Tie Plate	01
08	091412	Metering Rol. Eccentric	02
07	091411	Non-Op Side Frame	01
06	091409	Op Side Frame	01
05	090850	R.H. and L.H. Seal Set	01
04	091450	Seal Backing Plate Kit	01
03	091470	Osc. Roller Ass'y	01
02	098870	Metering Roller Assy, 52/C	01
01	094810	Form Roller Assy	01
ITEM#	PART #	DESCRIPTION	QTY

# KRP-52 BRACKET KIT: P/N 098480

PARTS CATALOG #098492 REV. I



ITEM#	PART #	DESCRIPTION	QTY
85	098524	SPACER	02
84	092586	BALL BEARING	01
83	098532	BLANKING PLUG (V 9)	01
82	098538	BLANKING PLUG (V 26)	02
81	098537	BLANKING PLUG (V 24)	01
80	098536	BLANKING PLUG (V 232)	01
79	098535	BLANKING PLUG (V 21)	01
78	098534	BLANKING PLUG (V 17)	01
77	098533	BLANKING PLUG (V 10)	01
76	098134	LABEL, SAFETY GUARD	*
75	091712	M8 x 12MM SHOULDER SCREW	02
74	091692	M4 BELLEVILLE WASHER	08
73	091689	M5 BELLEVILLE WASHER	17
72	091696	M5 x 20 MM CAP SCREW	04
71	091691	M4 x 16 MM CAP SCREW	03
70	091760	M4 x 10 MM CAP SCREW	05
69	091888	M5 x 5 MM SET SCREW	02
68	091694	M12 x 70 MM CAP SCREW	01
67	091693	M12 x 55 MM CAP SCREW	01
66	091891	M5 x 16 MM CAP SCREW	04
65	091697	M5 x 16 MM FLAT HEAD SCREW	01
64	091975	3/8 - 16 NUT	*
63	091695	M12 BELLEVILLE WASHER	02
62	091752	M5 NUT	02
61	091698	M5 x 12MM CAP SCREW	08
60	091845	# 10-32 x 3/8 CAP SCREW	*
59	091962	WASHER	*
58	092077	PULL HANDLE	*
57	092779	LONG NECK SYRINGE	01

ITEM#	PART #	DESCRIPTION	QTY
56	092774	WASH UP BOTTLE	**
55	092756	1/2 ID VINYL HOSE	01
54	091911	ADJUSTABLE CLAMP	*
53	092750	ADAPTOR BASE ASSEMBLY	01
52	092740	BOTTLE VALVE ASSEMBLY	01
51	092760	DISPENSING VALVE ASSEMBLY	**
50	092772	1/2 GALLON CALIBRATED BOTTLE	**
49	091672	SPRING CLIP	01
48	092749	UNIVERSAL BOTTLE BRACKET	01
47	098033	PIVOT DOWEL	02
46	091528	3/8 ID VINYL HOSE	01
45	092765	O-RING	*
44	098509	BOTTLE BRACKET	01
43	098515	UPPER SAFETY GUARD ASS'Y	**
42	098517	LOWER SAFETY GUARD	**
41	098508	LOWER GUARD PIVOT BRACKET	01
40	098507	LIGHT BAR BRACKET	02
39	098499	PAN BRACKET	02
38	098497	DRIP PAN ASS'Y	**
37	098504	DRIVE SHAFT COUPLING	01
36	091755	M10 x 25MM CAP SCREW	04
35	091976	Ø 10MM, PLAIN WASHER	06
34	098503	DRIVE SHAFT KEY	01
33	091709	Ø6MM x 12MM SHOULDER SCREW	06
32	098514	RETRACTABLE SPRING PLUNGER(FR-375P)	*
31	091889	M5 x 10MM SET SCREW	02
30	090850	R.H. AND L.H. SEAL SET	01
29	098500	DRIVE SHAFT ASS'Y	01

ITEM#	PART #	DESCRIPTION	QTY
28	091688	THREADED INSERT (M10 x M16x 17MM)	02
27	098506	STRIPE ROD STANDOFF	02
26	090756	T-ALLEN KEY 2.5MM	01
25	090758	BALL END ALLEN KEY 8MM	01
24	091705	RETAINING RING 1 3/8	02
23	091706	SHIM	04
22	098511	BALL BEARING (61907)	02
21	098495	GEAR CLUTCH ASS'Y	01
20	091763	M10 x 25MM LOW HD. CAP SCREW	02
19	098489	STRIPE ROD BLOCK	02
18	098486	R.H. LIFT CAM	01
17	098485	L.H. LIFT CAM	01
16	098484	PIVOT SHAFT HOUSING	01
15	098483	DRIVE SHAFT HOUSING NUT	02
14	098482	R.H. MOUNTING BRACKET	01
13	098481	L.H. MOUNTING BRACKET	01
12	091512	FIXING BLOCK	02
11	091511	ADJUSTING ECCENTRIC	02
10	091966	SHIM	08
09	091662	12 MM RETAINING RING	02
08	098541	STRIPE BLOCK BUSHING	02
07	091704	SHIM	03
06	091627	14 MM RETAINING RING	01
05	091546	M4 x 6MM NYLON SET SCREW	02
04	091973	M6 LOCK NUT	02
03	098512	COMPRESSION SPRING	02
02	091613	ADJUSTING SCREW	02
01	098549	ASS'Y, SPRING ROD AND BLOCK	02

\* ITEM IS INCLUDED WITH OUTLINED SUBASSEMBLY  
 \*\* ITEM IS NOT INCLUDED WITH BRACKET KIT, P/N 098480